



27 Albert Street, Thornton, Bradford, BD13 3ER

£220,000

- MODERN END TOWNHOUSE
- LARGE CORNER PLOT
- SINGLE DETACHED GARAGE
- SIDE EXTENSION
- CLOSE TO VILLAGE AMENITIES
- THREE TO FOUR BEDROOMS
- BLOCK PAVED DRIVE FOR TWO CARS
- TWO RECEPTION ROOMS
- COVERED PATIO SEATING AREA
- EARLY VIEWING ADVISED

27 Albert Street, Bradford BD13 3ER

**** THREE-FOUR BEDROOM END TOWNHOUSE ** SIDE EXTENSION ** LARGE CORNER PLOT ** GARAGE & OFF-ROAD PARKING ** CLOSE TO VILLAGE AMENITIES **** Bronte Estates are pleased to offer for sale this ideal family home in the heart of Thornton village with amenities just a short walk away. The property sits on a good-sized corner plot with superb outdoor space, a block paved driveway, single garage and a large covered patio seating area. Internally the property comprises of: Entrance Hall, Lounge, Dining-Kitchen, Sun Room/Sitting Room, two double Bedrooms and a single Bedroom to the first floor and a family Bathroom, plus a large attic room. Early viewing is advised.



Council Tax Band: B



Entrance Hall

The front entrance door leads into a hallway with stairs off to the first floor, coat hooks, laminate flooring and a central heating radiator.

Door to:

Lounge

17'8 x 11'7

Laminate flooring, window to the front elevation, central heating radiator and double doors to:

Dining Kitchen

14'8 x 10'1

A well fitted dining kitchen with a good range of base and wall cabinets, laminate surfaces and complimentary splash-backs. Integrated appliances include: a double electric oven and grill, electric hob and a dishwasher. Plumbing for a washing machine, stainless steel sink and drainer and two windows to the rear elevation.

Central heating radiator, ample space for a dining table and a door to:

Sun Room/Sitting Room extension

11'6 x 11'1

Windows to three sides and two external doors. Housing the central heating boiler.

First Floor

Landing area with a window to the side elevation affording open distant views. Doors off to the bedrooms and bathroom.

Bedroom One

15'5 x 8'9

Window to the front elevation, laminate flooring and a central heating radiator.

Bedroom Two

12'3 x 8'9

Fitted wardrobes with sliding doors, window to the rear elevation and a central heating radiator.

Bedroom Three

6'6 x 5'6

A small single bedroom currently used as an office with fitted storage. Window to the front elevation and a central heating radiator.

Bathroom

A white bathroom suite comprising of a panelled bath with electric shower over, pedestal

washbasin and a low flush WC. Window to the rear elevation and a heated towel rail.

Attic Room

14'7 x 13'4

Laminate flooring, Velux roof windows and a central heating radiator.

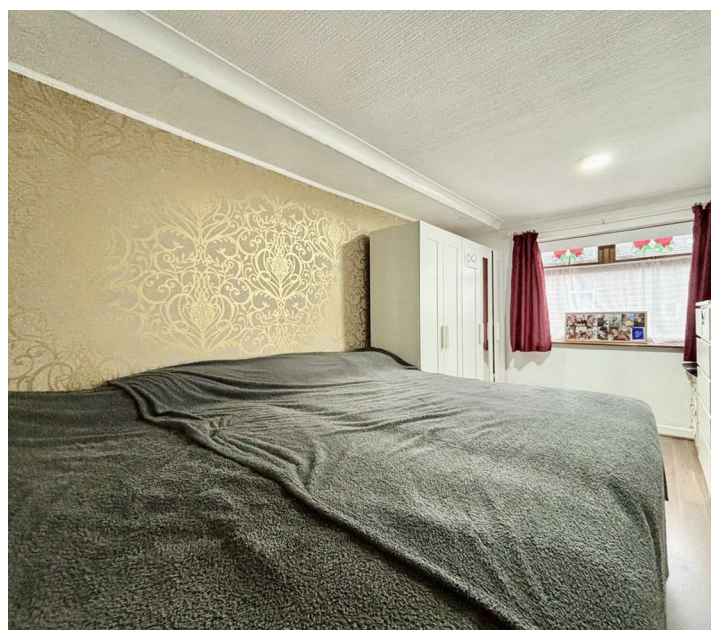
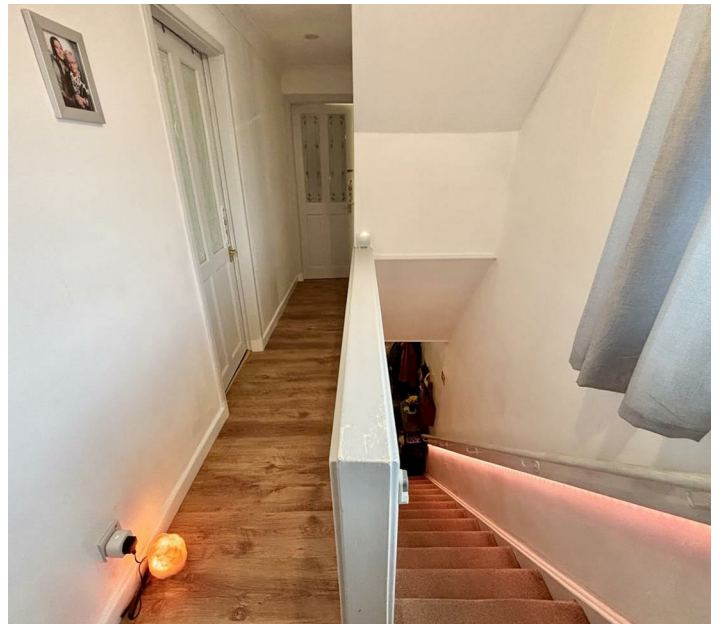
External

To the front of the property is a block paved driveway with parking for two cars. To the side is a generous garden area, mainly paved with a small decking area, flower beds and a single detached garage. To the rear is another enclosed garden with a covered deck seating area that's ideal for entertaining, artificial grass and two garden sheds. Potential to extend the property further, subject to the new owners securing the required planning consents & approvals.

Garage

Single detached garage accessed from Wold Close.

EPC & Floor plan to follow







Directions

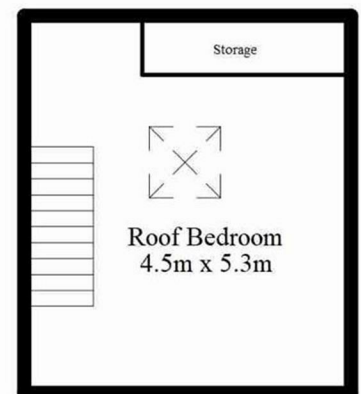
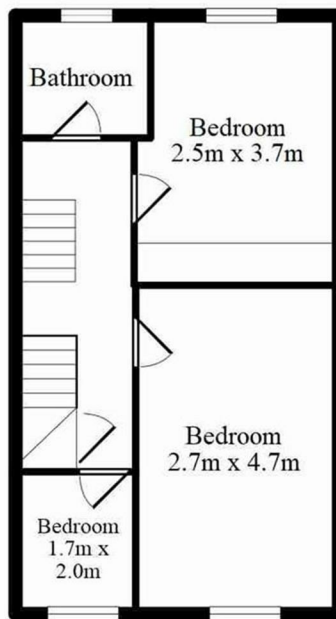
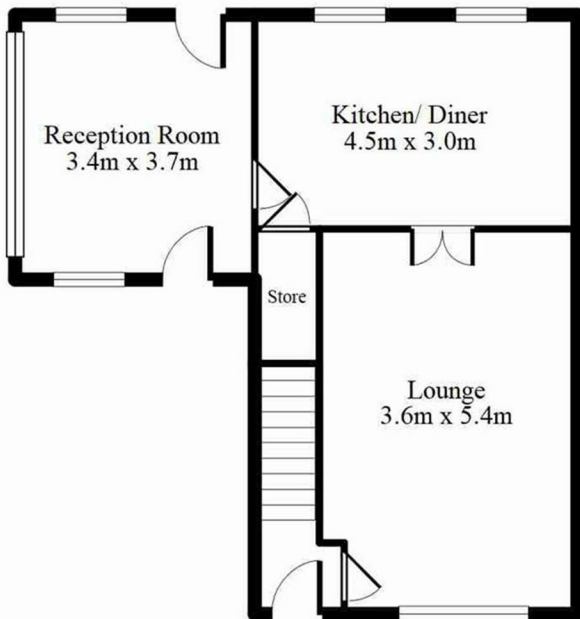
Viewings

Viewings by arrangement only.
Call 01274884040 to make an appointment.

EPC Rating:

C

Energy Efficiency Rating		Current	Potential
Very energy efficient - lower running costs			
(92 plus) A			
(81-91) B			
(69-80) C		69	74
(55-68) D			
(39-54) E			
(21-38) F			
(1-20) G			
Not energy efficient - higher running costs			
England & Wales		EU Directive 2002/91/EC	



Every attempt has been made to ensure this floor plan is accurate, however their accuracy is not guaranteed. The floorplan is for illustrative purposes and should be used in that context. GFPMs 2025